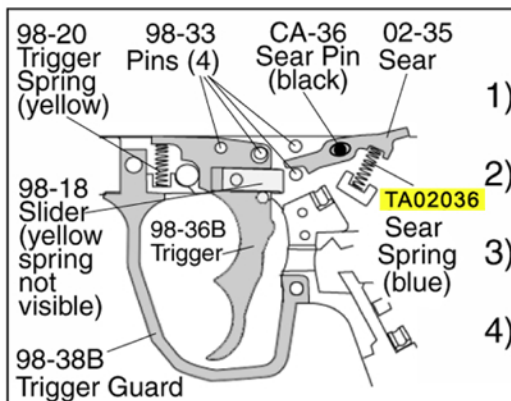
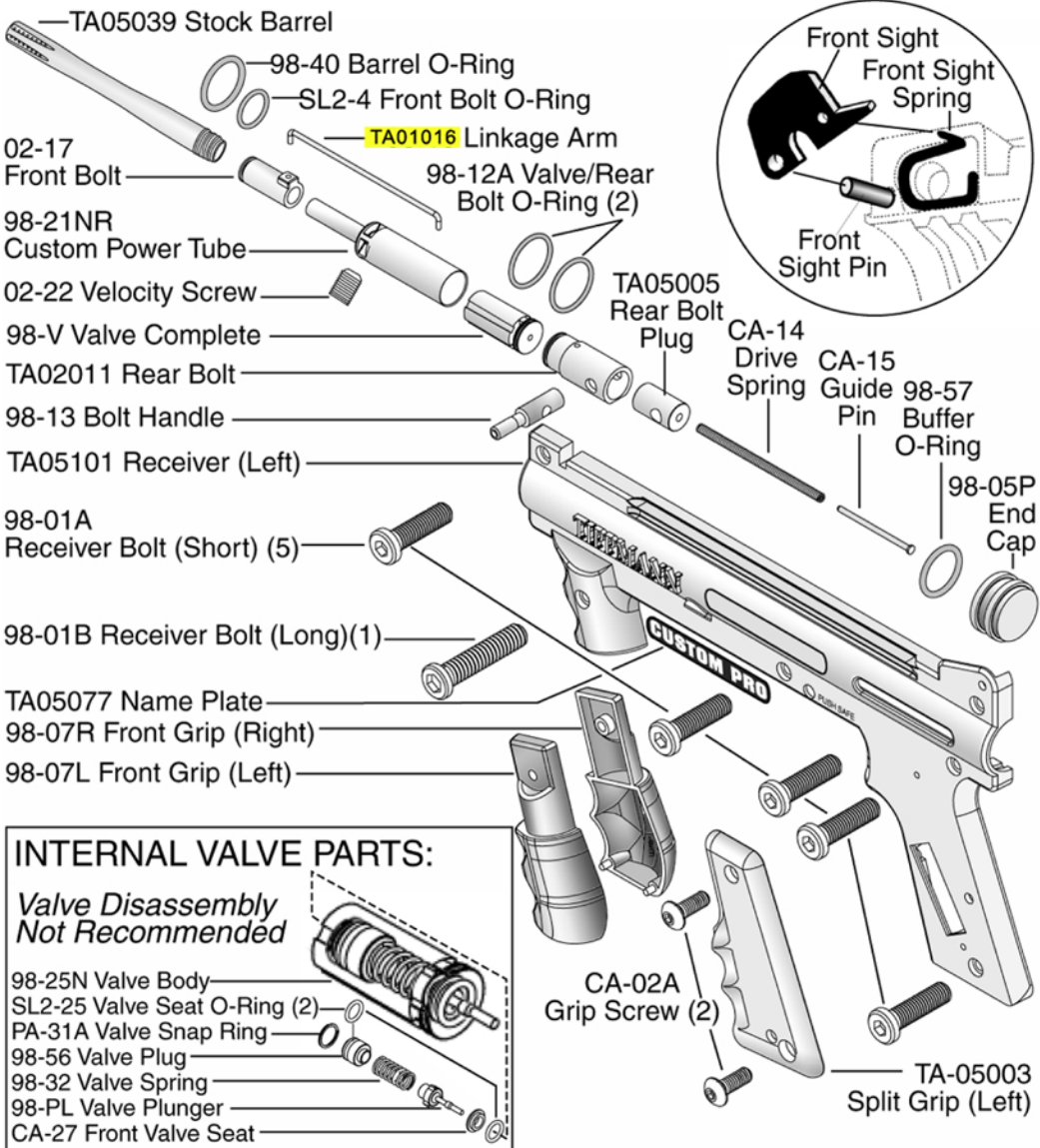


# CUSTOM PRO™ RESPONSE™ Parts List



## TRIGGER ASSEMBLY

- 1) Place 4 pins and 1 black sear pin into locations as shown.
- 2) Then place the trigger and sear onto pins as shown.
- 3) Insert sear spring (blue) as shown.
- 4) Insert trigger spring (yellow) as shown.

# WARNING

**DO NOT FIELD STRIP OR OTHERWISE DISASSEMBLE THIS MARKER WHILE IT IS PRESSURIZED WITH AIR.**

Yellow = Diagram Correction  
Courtesy of Tippmannparts.com

